

Filtek™ Supreme XTE

Universal Restorative



Any place. Any class.

It's the one that can do it all.

Designed to be versatile.

If you're still using one composite for strong posterior fillings, and another composite for highly esthetic anterior work—then you're about to learn how to simplify your procedures, your inventory and your practice.

With over 400 million* restorations globally, Filtek™ Supreme XTE Universal Restorative is the ONE composite that can do it ALL.

It's beautiful enough for anterior restorations, but also strong enough for posterior restorations. Filtek Supreme XTE restorative is the one to choose for all of your direct restorative needs.



Available in capsules and syringes.

Filtek™ Supreme XTE Universal Restorative

"I've been using Filtek for years and have found it to be one of the few products that are great for both anterior and posterior use. It polishes great and has very good shade stability." Testimonial, Cybertuth

★★★★★ Read what others are saying at www.3MESPE.com/review

It's universally beautiful for any practice.

Unsurpassed Esthetics

- Excellent polish retention
- Wide range of shades and opacities
- Natural-looking fluorescence

Simple to Use

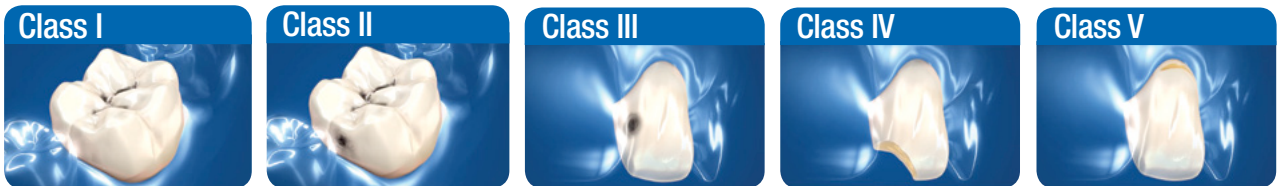
- Exceptional handling
- Capsules and syringes are color-coded by opacity
- Bold, easy-to-read labels

Performance

- Excellent wear resistance
- Radiopaque
- Outstanding strength for anterior and posterior use

The composite that can do it all.

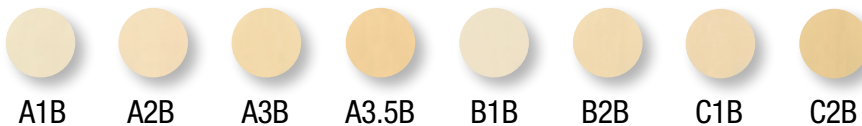
Any place: anterior or posterior. Any class.



Any esthetic solution.

Single-shade restorations

If you prefer the simplicity of a single-shade technique, Filtek Supreme XTE Universal Restorative offers 17 natural-looking Body shades that match the VITA® classical Shade Guide. Research shows that **clinicians tend to select 8 shades for the majority of their restorative needs**—in all classes. A simplified selection means a simpler inventory too.



Multi-shade restorations

If you prefer taking esthetics to a higher level using a dual-shade or multi-shade layering technique, then you'll enjoy having 36 beautiful shades and 4 opacities to choose from.

Syringes and capsule bottle labels are color-coded by opacity and have bold lettering for fast, accurate selection.



Color is as much a subjective interpretation as it is a scientific manual on shade definition. Matching does not exist. visual shade. Enamel subjective protocol than others, clinicians should have a basic knowledge been attained, operators should then be in a position to devise individual practice. Enamel too often consider the esthetic success of a restoration. The color error might not be noticed in other parts of the all components of color, it is transparency. However, the harmony of the final restoration in relation to the patient's smile, facial space, are important. Body dental arch, as well as one allows more direct reflection. Translucent perception (e.g., a reflection gives a local shade has the same character in the three-dimensional guide would be a matching armar indicate that there is a human observers discrimination as a human observer is dependent relative positions of the illumination, the object and the observer.

Opacities: Dentin, Body, Enamel and Translucent designations refer to differences in opacity.

Designed to be beautiful.

Remarkable polish

The initial gloss of most restoratives can be very impressive. But you want to know your restoration is going to retain its natural gloss for years. Filtek™ Supreme XTE Universal Restorative is easier to polish ... and tests prove the polish retention is better than other composites, and is even better than a microfill.

A difference you can see.

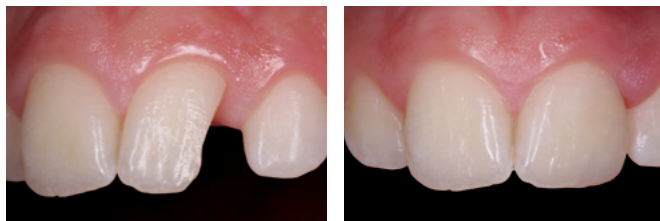


Polish you can see. Side-by-side photos compare the polish retention of leading restoratives to that of Filtek™ Supreme XTE Universal Restorative after 6,000 cycles of simulated toothbrushing.

Anterior

Restoration created using three shades (A3D, A3.5B, A1E) of Filtek™ Supreme XTE Universal Restorative.

Photo courtesy of Dr. Gabriel Krastl, Department of Periodontology, Endodontics and Cariology, University of Basel, Switzerland.



3M ESPE nanofiller technology:

Unsurpassed polish retention for superb esthetics.

The significant distinction between Filtek Supreme XTE restorative and micro- and nanohybrids is that 3M ESPE's nanoparticles are uniquely FORMED in the nano size range and are not the result of a grinding process. Some nanoparticles of Filtek Supreme XTE restorative are fused into secondary structures called NANOCCLUSERS.

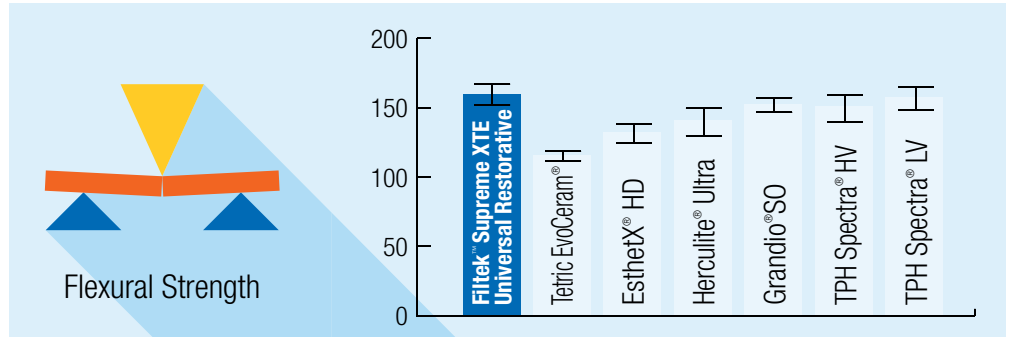
The nanoclusters shear at a rate similar to the wear of the surrounding resin matrix during abrasion, such as toothbrush abrasion. That's why Filtek Supreme XTE restorative maintains a smooth surface gloss, giving restorations unsurpassed polish retention for superb esthetics.

Designed to be strong.

Excellent flexural strength

In a test comparing leading dental composites, the flexural strength of Filtek™ Supreme XTE Universal Restorative proved better than that of EsthetX HD, Herculite Ultra and Tetric EvoCeram, and comparable to other composites tested.

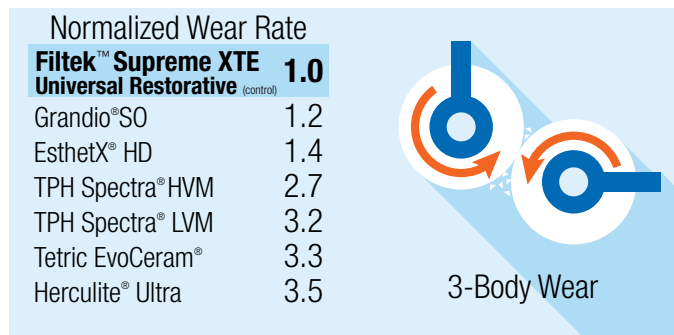
Source: 3M ESPE internal data



Better wear resistance

The lower the wear rate of a composite material, the better its wear resistance. In an in vitro 3-body wear test, Filtek™ Supreme XTE Universal Restorative had the lowest wear rate of all leading composites tested.

Source: 3M ESPE internal data



Normalized wear rate (over 200,000 cycles)

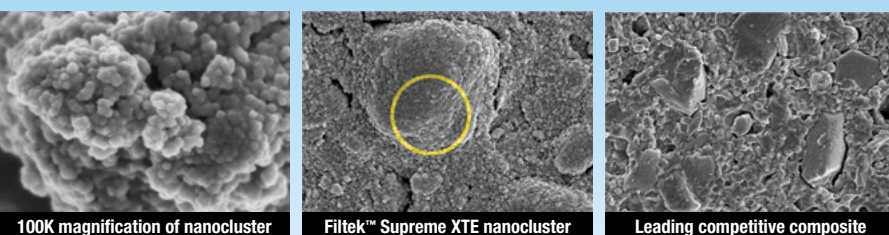
Posterior

Amalgam filling replaced by Filtek™ Supreme XTE Universal Restorative in a posterior restoration.

Photo courtesy of Dr. Grant Chyz.



*Source: 3M ESPE internal data



Excellent strength and wear resistance

Filtek Supreme XTE Universal Restorative nanoclusters have a similar size range as fillers found in the hybrid composites, therefore they provide for high filler loading. This results in excellent physical properties and wear resistance, making it ideal for posterior restorations.

SEM photos courtesy of Dr. J. Perdigao, University of Minnesota.

Our versatile flowable is a perfect companion to our leading nanocomposite.

Flowables provide an easy solution for a wide range of cases.

While efficiency is key, you need to be confident your restorative will perform as expected—and handle beautifully using your technique. That's why dentists are choosing Filtek™ Supreme XTE Flowable Restorative. Its enhanced properties make it **ideal for multiple indications.**

- Using it as a **liner/base**, you'll enjoy excellent handling, cavity adaptation and shade selection.
- As a **filling material**, you'll find it esthetic, easy to use and polish.



Filtek™
Supreme XTE
Flowable Restorative

Our universal and flowable restoratives are designed to work together.

The same unique nanotechnology used by Filtek™ Supreme XTE Universal Restorative gives our flowable advantages such as:

- Excellent esthetics (available in 12 shades formulated to match Filtek Supreme XTE Universal Restorative)
- Unsurpassed polish retention*
- Low wear

In fact, a 2-year clinical study involving Class I restorations¹ showed that the performance of Filtek Supreme XTE Flowable Restorative was equal to that of Filtek Supreme XTE Universal Restorative for all criteria measured—including wear resistance.

2-Year Study¹ shows our universal and flowable composites performed equally on all criteria measured:



1. Small (width < ½ the intercuspal distance) non stress-bearing occlusal restorations, University of Alabama School of Dentistry.

*Among flowables tested. Source: 3M ESPE internal data

A full line of Filtek™ restorative solutions to fit your unique needs.

Versatility & Esthetics



**Filtek™
Supreme XTE**
Universal Restorative



**Filtek™
Supreme XTE**
Flowable Restorative

Efficiency & Simplicity



**Filtek™
Bulk Fill**
Posterior Restorative



**Filtek™
Bulk Fill**
Flowable Restorative

Class I
Class II
Class III
Class IV
Class V
Liner/Base

	Filtek™ Supreme XTE Universal Restorative	Filtek™ Supreme XTE Flowable Restorative	Filtek™ Bulk Fill Posterior Restorative	Filtek™ Bulk Fill Flowable Restorative
Class I	✓	✓ Minimally Invasive†	✓ Up to 4 mm	✓ Minimally Invasive†
Class II	✓		✓ Up to 5 mm	
Class III	✓	✓		✓
Class IV	✓			
Class V	✓	✓		✓
Liner/Base		✓		✓

✓ = Recommended uses

Refer to Instructions for Use for full list of indications.

†Small, non stress-bearing occlusal restorations

Ordering Information

Item #	Product Information
4911S	Filtek™ Supreme XTE Universal Restorative Single Shade Introductory Kit—Capsule Kit includes: 40 – 0.2g capsules: 20 each of Body shades A2 and A3; 1.5g vial Adper™ Easy Bond Self-Etch Adhesive; Technique Guide; Instructions for Use
4910S	Filtek™ Supreme XTE Universal Restorative Single Shade Introductory Kit—Syringe Kit includes: 2 – 4g syringes: 1 each of Body shades A2 and A3; 1.5g vial Adper Easy Bond Self-Etch Adhesive; Technique Guide; Instructions for Use



3M™ ESPE™ Shade Selector Wheel Simplifies the selection process and serves as a guide for placing one to four shades of composite. Included in every Dual-Shade Kit and Professional Kit.

Item #	Product Information
--------	---------------------

REFILLS—Filtek™ Supreme XTE Universal Restorative

BODY SHADES	SYRINGE	CAPSULE
A1B	4910A1B	4911A1B
A2B	4910A2B	4911A2B
A3B	4910A3B	4911A3B
A3.5B	4910A3.5B	4911A3.5B
B1B	4910B1B	4911B1B
B2B	4910B2B	4911B2B
C1B	4910C1B	4911C1B
C2B	4910C2B	4911C2B
A4B	4910A4B	4911A4B
A6B	4910A6B	4911A6B
B3B	4910B3B	4911B3B
B5B	4910B5B	4911B5B
C3B	4910C3B	4911C3B
D2B	4910D2B	4911D2B
D3B	4910D3B	4911D3B
White	4910WB	4911WB
Extra White	4910XWB	4911XWB

THE 8
"GO-TO"
BODY
SHADES

DENTIN SHADES	SYRINGE	CAPSULE
A1D	4910A1D	4911A1D
A2D	4910A2D	4911A2D
A3D	4910A3D	4911A3D
A4D	4910A4D	4911A4D
B3D	4910B3D	4911B3D
C4D	4910C4D	4911C4D
White	4910WD	4911WD

ENAMEL SHADES	SYRINGE	CAPSULE
A1E	4910A1E	4911A1E
A2E	4910A2E	4911A2E
A3E	4910A3E	4911A3E
B1E	4910B1E	4911B1E
B2E	4910B2E	4911B2E
D2E	4910D2E	4911D2E
White	4910WE	4911WE
Extra White	4910XWE	4911XWE

TRANSLUCENT SHADES	SYRINGE	CAPSULE
Clear	4910CT	4911CT
Blue	4910BT	4911BT
Grey	4910GT	4911GT
Amber	4910AT	4911AT

SYRINGE SHADE REFILLS include 1 – 3g syringe
CAPSULE SHADE REFILLS: Dentin, Enamel and Translucent Shade Refills include 10 – 0.2g capsules; Body Shade Refills include 20 – 0.2g capsules; Instructions for Use.

Filtek™ Supreme XTE Flowable Restorative



REFILL SHADES	SYRINGE	CAPSULE
A1	4920A1	4921A1
A2	4920A2	4921A2
A3	4920A3	4921A3
A3.5	4920A3.5	4921A3.5
A4	4920A4	4921A4
B1	4920B1	4921B1
B2	4920B2	4921B2
C2	4920C2	4921C2
D2	4920D2	4921D2
White	4920W	4921W
Extra White	4920XW	4921XW
OA3	4920OA3	4921OA3

SYRINGE REFILLS: A SHADES include 2 – 2g syringes; 20 dispensing tips
all other SHADES include 1 – 2g syringes; 20 dispensing tips;
Instructions for Use.

CAPSULE REFILLS: A SHADES include 20 – 0.2g capsules;
all other SHADES include 10 – 0.2g capsules; Instructions for Use.

www.3MESPE.com



3M ESPE AG

ESPE Platz
82229 Seefeld
Germany
Email: info3MESPE@mmm.com
Internet: www.3MESPE.com

Please recycle. Printed in (Country).

3M, ESPE and Filtek are trademarks of 3M or 3M Deutschland GmbH. Used under license in Canada. © 3M 2015. All rights reserved. All other trademarks are not trademarks of 3M.