



Transform the way you work

Start injecting with our strongest
direct restorative ever*

**G-ænial™ Universal
Injectable**



Welcome to the future

G-ænial™ Universal Injectable is destined to be a game-changer in restorative dentistry. With its unique characteristics it will truly transform the way you work.

World-leading technologies have enabled GC to define a new benchmark composite offering **exceptional strength**, **unsurpassed polishability** and fantastic tooth-blending esthetics.

You will be amazed at how it is both **injectable and shapeable at the same time**. It adapts perfectly to the cavity floor and lets you build, shape and contour while you are injecting – because **G-ænial™ Universal Injectable** does not slump!

It will also save you time and money because placement is so much faster and you do not waste any material at all – you only use what is needed.

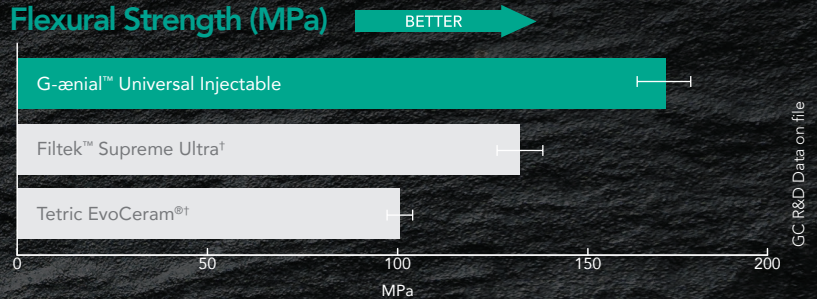
Try it for yourself and embrace the future! You will never look back.



Exceptional
Strength
and Wear
Resistance

Our strongest direct restorative ever*

GC's world-leading filler technologies have allowed us to develop an injectable material that is significantly stronger than most conventional paste composite materials. It's a new paradigm in thinking that a composite with a more flowable consistency is actually your strongest option!



3 Steps in 1 -
Shape and Contour
as You Inject

Inject, shape & contour all at once

Because G-ænial™ Universal Injectable doesn't slump or string, you have total control to adapt, shape and contour as you inject for fast, effortless restorations. It will adapt perfectly to the cavity floor and allows you to easily build contours, cusps and even proximal walls.

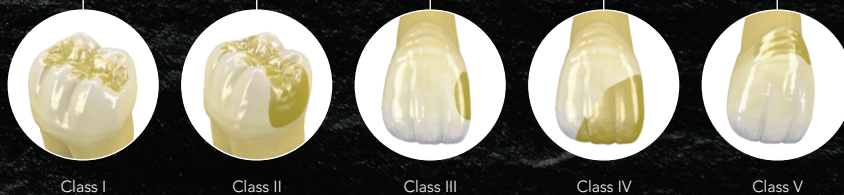


Dr Javier Tapia Guadix - Spain

Unsurpassed
Polishability
with Beautiful
Esthetics

Universal
Application
for all Cavity
Classes

Faster
Placement
Time with No
Waste



Class I

Class II

Class III

Class IV

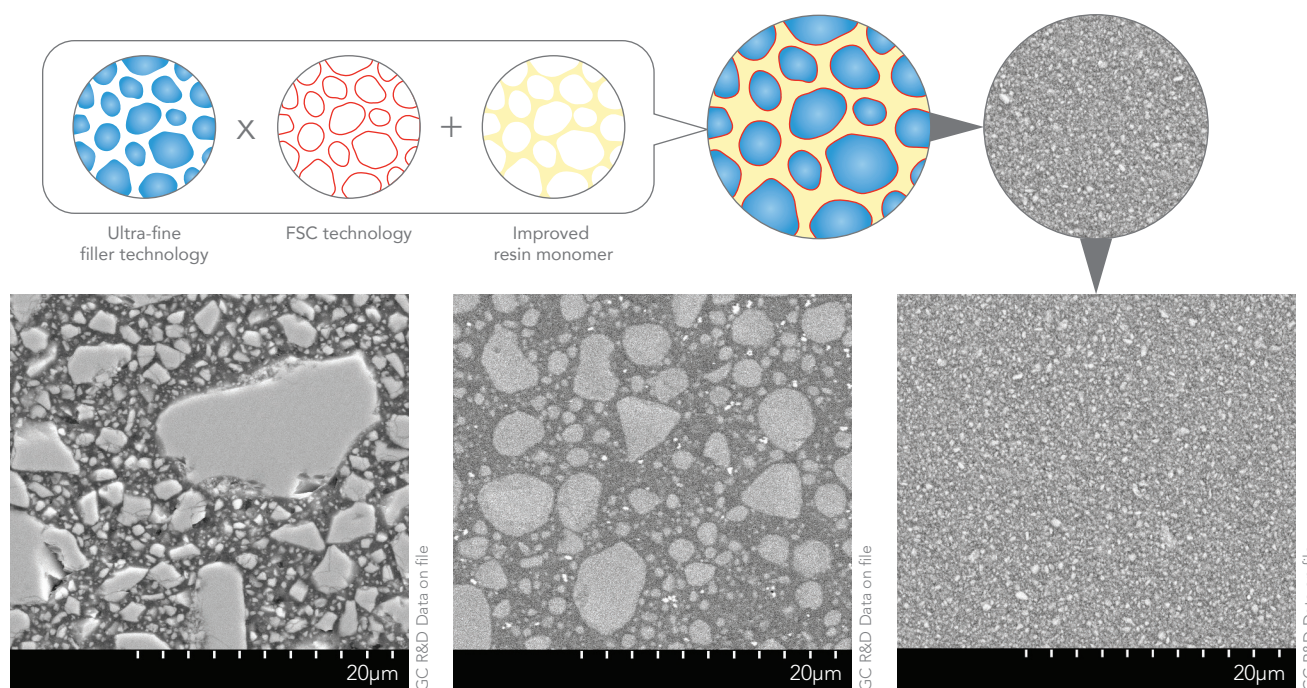
Class V

3ⁱⁿ1 Technologies



World-leading innovation and technology

Our latest Full-Coverage Silane Coating (FSC) technology makes it possible to homogeneously and densely disperse ultra-fine 150nm fillers in the improved resin monomer matrix giving unparalleled strength, durability and energy-absorbing resilience with high radiopacity (252% Al).



Micro Hybrid – Typically contains a range of glass and nano fillers of varying sizes

Nano composite – Typically contains spherical nano clusters made up of agglomerated nano fillers of varying sizes

G-aenial™ Universal Injectable – Ultra-fine 150nm homogeneously dispersed glass fillers

Innovative syringe design delivers with ease & no slumping

With effortless extrusion, our new syringe is a joy to use - and the bendable tips make precise delivery easy.



3ⁱⁿ1 Benefits

Exceptional Strength

+

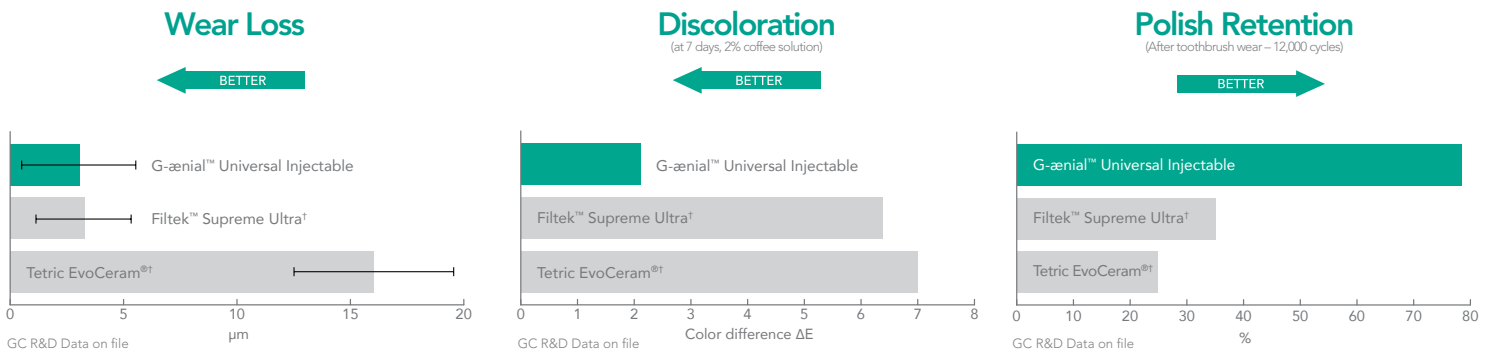
Unsurpassed Surface Integrity

+

Long Lasting Esthetics

Superior strength, wear resistance and polish retention

G-ænial™ Universal Injectable’s high-density structure not only provides exceptional strength, but also greater wear resistance, unmatched high polish retention and high resistance to discoloration for long-lasting esthetics.



3ⁱⁿ1 Savings

Less Time

+

No Waste

+

Less Stress

Save time, save material, save stress

With far fewer steps than conventional composite, the time savings for restorations are significant. G-ænial™ Universal Injectable also eliminates waste. You only use what you need! And because G-ænial™ Universal Injectable doesn’t string or slump the whole process is easier and the end result is less stress in your day.

Conventional pastes

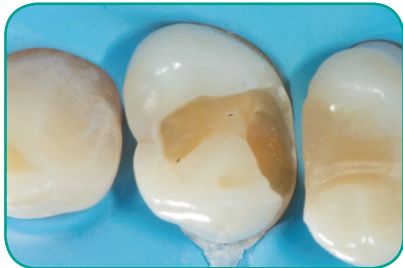


G-ænial™ Universal Injectable



Case Studies

Class II restoration



1. Removal of the old restoration and caries removal.



2. Undercuts can easily be reached thanks to the bendable tips.



3. Building the proximal wall using the enamel shade JE.



4. Removal of the sectional matrix after building the wall.



5. A class I procedure can now be followed; the dentin layer is created with the A4 shade.



6. Final situation after finishing and polishing of the margins.

Dr Javier Tapia Guadix – Spain

Full-incisal build up and cervical restorations with single shade



1. Pre-operative showing lower incisal wear and cervical lesions requiring conservative restorations.



2. Full build up and VDO increase of lower incisors using a single shade and cervical lesions requiring restorations.



3. Final conservative management of different types of restorations using a single shade.

Dr Anthony Mak – Australia

Management of early worn dentition



1. Early wear evident on 40-year old patient needing conservative management.



2. Old composite restorations removed and teeth micro-etched. Build up and restorations on the occlusal surface using alternate teeth technique.



3. Final restorations using a single shade injection technique, shade A1.

Dr Anthony Mak – Australia

Injection moulding technique



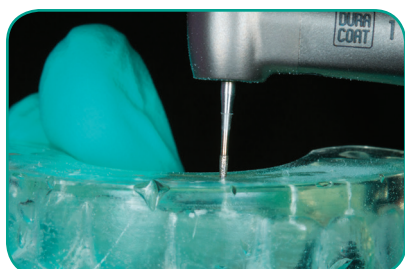
1. Model with wax-up of the desired tooth shape.



2. An impression tray is filled with EXACLEAR™.



3. The desired shape is copied. The mould can be easily removed from the impression tray and the model.



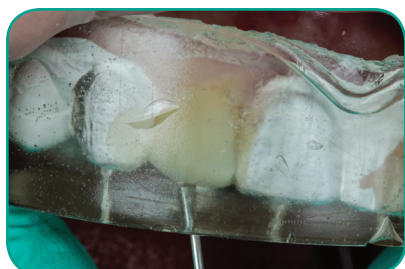
4. Holes are drilled in the EXACLEAR™ mould through which the composite will be injected.



5. Etching the enamel.



6. Application of the adhesive (G-Premio BOND™).



7. Injection of the composite into the mould. This process is repeated for each tooth.



8. Finishing the vestibular and palatal margins.



9. Finishing the approximal margins.



10. Polishing the composite restorations.



11. Result after polishing.



12. Smile after treatment.

Dr. Ali Salehi – France



An injectable high-strength ultra-fine particle composite with ideal viscosity, handling and adaptation characteristics that may be used for long-lasting esthetic restorations.

The homogeneously dispersed ultra-fine barium-glass particles formula (150nm particle size, 69% wt filler loading) provides high flexural strength and wear resistance for a durable and long lasting restoration.



Metal tip may be bent with fingers if necessary to better access posterior distal region.

Cavity Depth	Product Recommendation
Up to 2 mm	G-ænial™ Flo X or
	G-ænial™ Universal Injectable
Up to 4 mm	G-ænial™ BULK Injectable
4-6+ mm	G-ænial™ BULK Injectable & G-ænial Sculpt®

G-ænial™ Universal Injectable features high flexural strength, for protection against chipping and fracture, and outstanding wear resistance for excellent durability and gloss retention.



G-ænial™ Universal Injectable Refills

Contains: Two 1.7g (1.0mL) syringes, 10 long dispensing tips and 10 short dispensing tips.

012364 A1	012365 A2
012366 A3	012367 A3.5
012368 A4	012369 B1
012370 B2	012371 CV
012372 CVD	012373 AO1
012374 AO2	012375 AO3
012376 JE	012377 AE
012378 XBW	012379 BW