

START-X™

ACHIEVE HIGHER CONTROL AND PRECISION WITH
ULTRASONIC INSERTS SPECIFICALLY DESIGNED FOR ACCESS
CAVITY REFINEMENT AND CANAL ORIFICE LOCATION



A well prepared access cavity and location of canal openings are recognized as key factors to the **success of endodontic treatments**

The use of ultrasonic inserts is advised for these applications thanks to two main characteristics:

- A great working precision
- An incomparable view of the operative field

DENTSPLY Maillefer has therefore developed, together with Dr Berutti, Dr Cantatore and Dr Castellucci, a range of ultrasonic tips based on a simple concept **ONE TIP - ONE CLINICAL INDICATION**



Each tip has been designed for a specific indication and has the following main characteristics:

MICRO MILLED ACTIVE PART

- Minimized risk of potential diamond grit loss in the patient's mouth

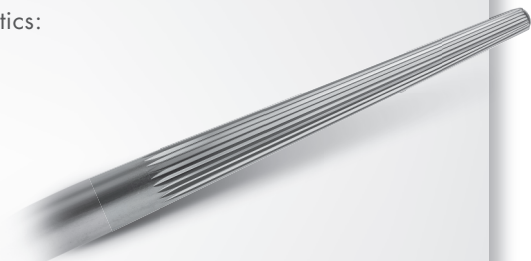
WATER PORT

- Cools down the insert and avoids overheating of the treated tooth. This is particularly important when removing metal posts which usually require high energy
- The intermittent use of irrigation enables the clinician to alternate between dry precision work and debris evacuation

EXCELLENT RESISTANCE TO FRACTURE

“According to my clinical experience, the START-X™ tips are one of the most fracture resistant ultrasonic inserts I have used.”*

Professor Elio Berutti



*Individual clinical results may vary

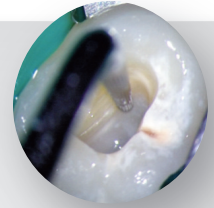
ONE TIP – ONE CLINICAL INDICATION

1



START-X™ #1

- > **Application** • Access cavity wall refinement
- > **Non active tip** • Avoids accidentally damaging the pulp chamber floor
- > **Active lateral part** • Creates a straight access to the canal

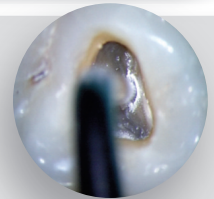


2

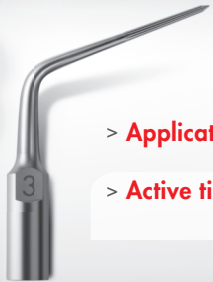


START-X™ #2

- > **Application** • MB2 canal scouter
(2nd canal mesio buccal root)
- > **Active tip** • Removes the dentine that often conceals the MB2 access in upper molars
- > **Active lateral part** • Creates a straight access to the canal

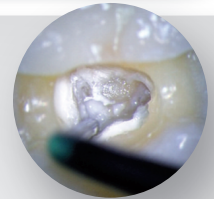


3



START-X™ #3

- > **Application** • Canal openings scouter
- > **Active tip** • Removes the obstructions that prevent a straight access to the canal

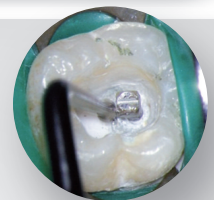


4



START-X™ #4

- > **Application** • Metal post removal
- > **Specific design** • Suitable for working efficiently both on the top and the sides of the metal post
- > **Water port** • Avoids over heating

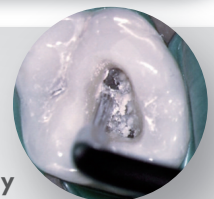


5



START-X™ #5

- > **Application** • Reveals the original pulp chamber floor anatomy
- > **Active tip** • Canal orifice location made easier thanks to the removal of calcifications and filling materials that hide the original pulp chamber floor anatomy
- > **Thin and cylindrical tip** • Good visibility



POWER SETTINGS


In general, within the recommended guidelines, start with a lower power setting and only increase the power if necessary to safely accomplish the procedural task

	SATELEC P5 NEWTRON		EMS MINIPIEZON	
	Min ←	Max →	Min ←	Max →
START-X™ 1	16	18	8	9
START-X™ 2	16	18	8	9
START-X™ 3	10	18	4	7
START-X™ 4	18	20	9	10
START-X™ 5	7	18	3	8

Power settings for other ultrasonic units are available on DENTSPLY Maillefer website www.dentsplymaillefer.com

- The power setting is adjusted depending on the specific clinical application
- The inserts have been designed to be exclusively used with a Piezo ultrasonic generator
- Technical specification/thread: EMS type M3 x 0.5mm
Satelec type M3 x 0.6mm

REFERENCES



M3x0.6mm SATELEC type	M3x0.5mm EMS type	START-X™ 1	START-X™ 2	START-X™ 3	START-X™ 4	START-X™ 5	X box
A 0660-1	A 0661-1	•					1x
A 0660-2	A 0661-2		•				1x
A 0660-3	A 0661-3			•			1x
A 0660-4	A 0661-4				•		1x
A 0660-5	A 0661-5					•	1x
A 0660-900	A 0661-900	•	•	•	•	•	5x

Available on Dentsply Maillefer website www.dentsplymaillefer.com
a video from Dr Berutti, Dr Cantatore and Dr Castellucci, illustrating the use of each START-X™ insert